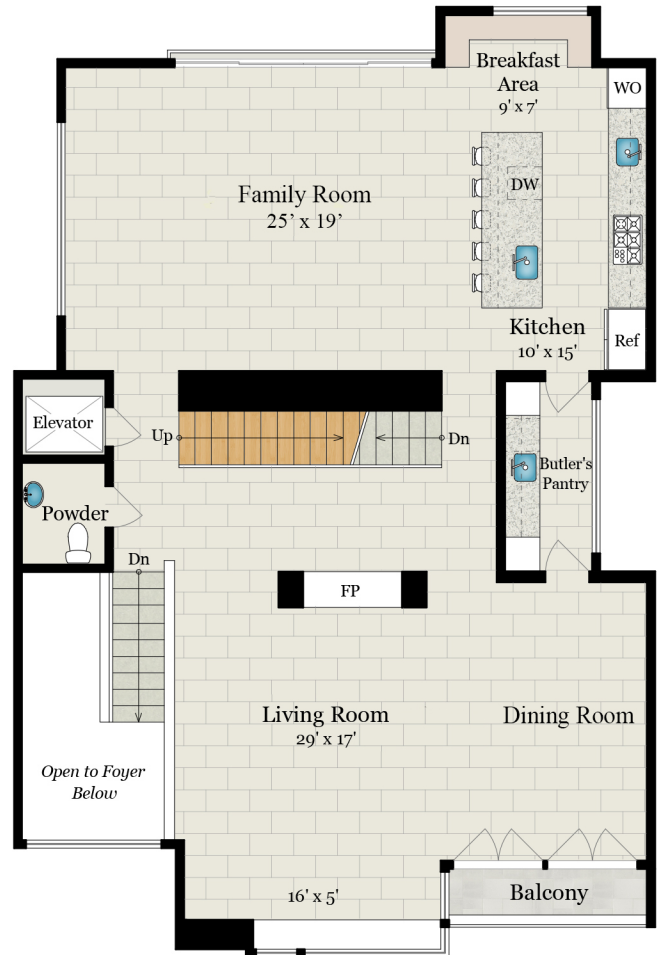


SAN FRANCISCO, CA 94109



## FIRST FLOOR

1,115 SQ FT



## SECOND FLOOR

1,815 SQ FT

Estimated Total Finished  
Square Footage: 5,610 SQ FT

Above-Grade: 5,610 SQ FT Below-Grade: N/A

Plus 795 SQ FT Garage on First Floor

Plus 20 SQ FT Storage on First Floor

Calculated per ANSI Standard Z765-2003.

\* Estimated Total Finished & Unfinished Square Footage: 6,425 SQ FT



### Rendering by Floor Plan Visuals.

All measurements are approximate. While deemed reliable, no information on these floor plans should be relied upon without independent verification.

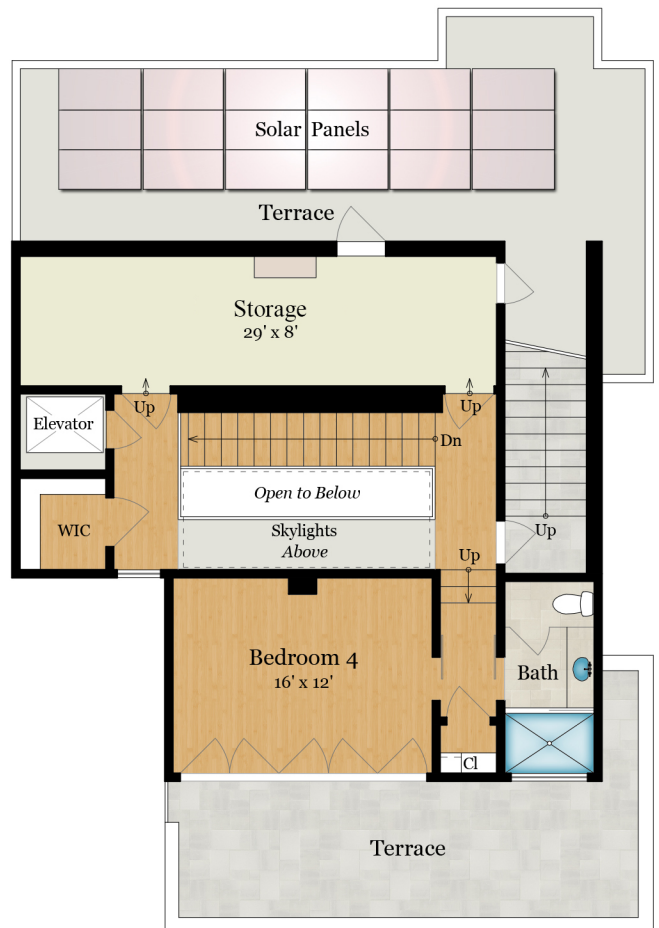
# 1209 FILBERT STREET

SAN FRANCISCO, CA 94109



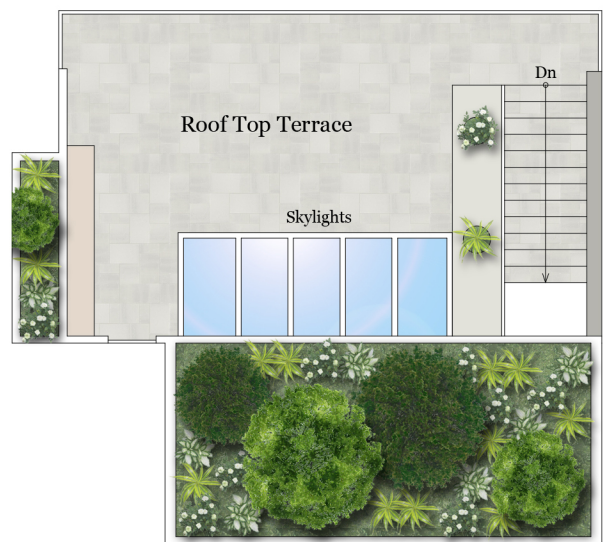
## THIRD FLOOR

1,785 SQ FT



## FOURTH FLOOR

895 SQ FT



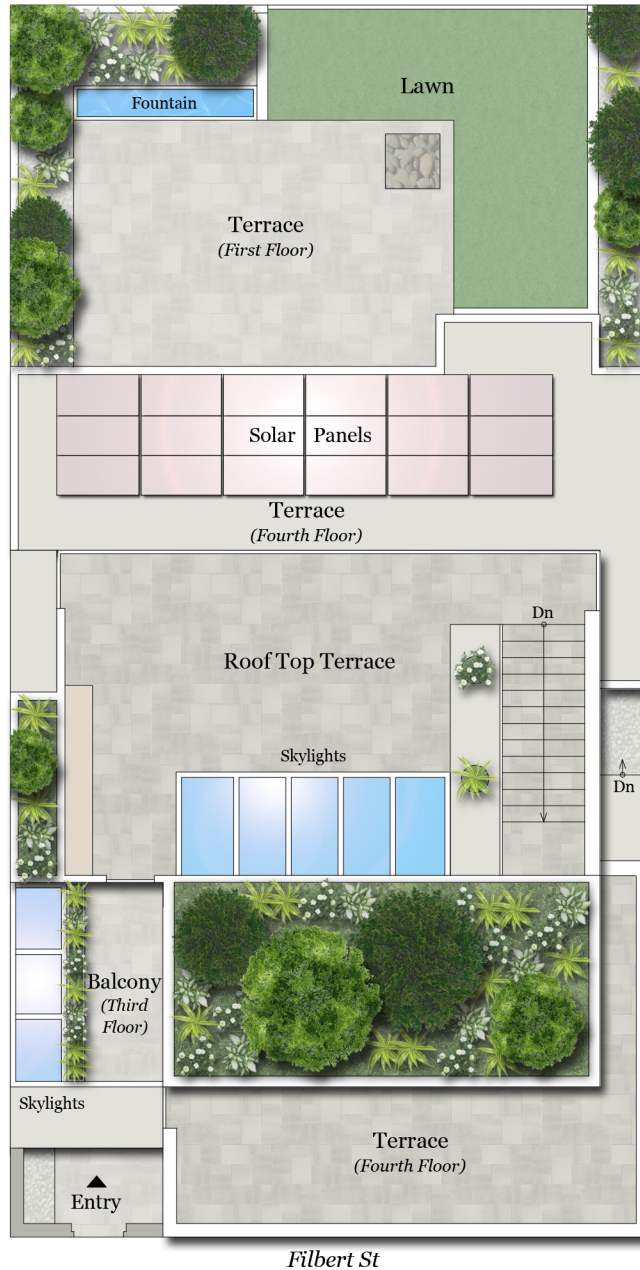
## ROOF TOP LEVEL



Rendering by Floor Plan Visuals.  
All measurements are approximate. While deemed reliable, no information on these floor plans should be relied upon without independent verification.

# 1209 FILBERT STREET

SAN FRANCISCO, CA 94109



Rendering by Floor Plan Visuals.  
All measurements are approximate. While deemed reliable, no information  
on these floor plans should be relied upon without independent verification.